

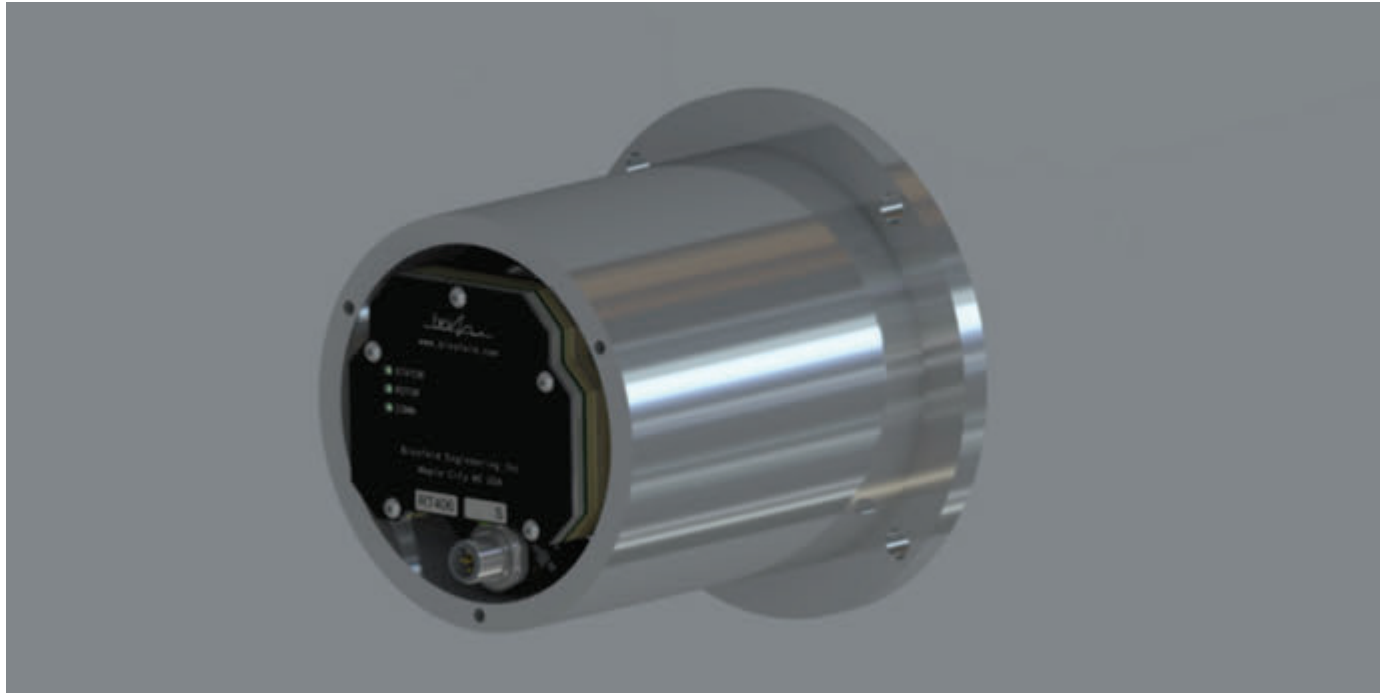
# 割绒机停产时间

宾士费尔德工程公司正在其位于W2展厅的F12展台展示新型的宾士费尔德RT406-1C型设备，这是一台设计用于6区S5型纽马格设备的单CAN总线传感器。这台RT406-1C型设备可以对2010年引入的RT406-2C型双CAN总线传感器形成补充。

宾士费尔德公司的首席执行官Stephen Tarsa解释道：“与我们的绝大多数产品一样，RT406-1C产品其实原本是响应特定的客户要求而开发出来的”。当时这位客户正在为原有的传感器寻找更加可靠的备选方案，希望不需要进行任何设备改装。RT406-1C型产品正是这位客户梦寐以求的：简易替代品可以实现宾士费尔德商标的可靠性和智能性，并且在旋转和静止组件之间提供宽松的间距，这些都意味着设备停运时间减少。

这家位于美国的公司是专门生产适用于导丝辊和加热辊旋转温度传感器的生产商，同时还在展示专门设计用于特吕茨勒瑞士公司（其前身为瑞士纺织公司）纺丝机的RT362型双通道传感器。据称，该RT362型产品也是一种简易替代品，可以让纤维生产商追加采用宾士费尔德公司的传感器技术，而且对现有设备具有可靠性。

这家公司也正在展示其全新的压光机（加热辊）传感器产品系列，即RT310系列产品，这一系列产品首次于2012年度的中国国际纺织机械展览会暨ITMA亚洲展览会上推出。从此以后，这家公司已经开发出更为轻巧、更为紧凑的设备版本，仍然具有相同的特征集合，其中包括



适用于来自宾士费尔德工程公司纽马格设备的RT406-1C 6型区温度传感器

RT406-1C 6-zone temperature transmitter for Neumag machines from Binsfeld Engineering

用于简化设备温度控制系统故障排查工作的错误检测和信号传送。

宾士费尔德公司正在演示其灵活的RT300和RT350型系列传感器，这些传感器具有多通道配置，可以与许多设备品牌相匹配，其中包括纽马格、瑞士纺织、立达、埃德曼以及东丽。输出信号适用于迪能公司或立达公司的频率或4-20毫安或电压系统。

宾士费尔德公司去年曾扩展网站并推出手机版，其中包括全部的发售产品，涵盖旋转温度传感器以及

用于测量转轴扭矩和功率的无线遥测系统。此外，该公司还曾因其在30多年来所取得的成功而荣获密歇根州西北部劳工发展委员会颁发的杰出商业奖。

（宾士费尔德公司去年曾推出新网站以及手机端，其中包括全部的发售产品，涵盖旋转温度传感器以及用于测量转轴扭矩和功率的无线遥测系统。此外，因其在30多年的时间里所取得的成功，该公司荣获密歇根州西北部劳工发展委员会颁发的杰出商业奖。）

今年元月份，宾士费尔德公司开始为完成ISO 9001注册而努力，并且计划于今年晚些时候获得此项认证。

（在元月份，宾士费尔德公司开始为完成ISO 9001认证而努力，并且计划于今年晚些时候获得此项认证。）

宾士费尔德公司称其在设计可靠的精密仪器方面享有盛誉，这些仪器可以在人造纤维挤出装置恶劣的运行环境下进行操作。

其设备系统采用精密电子产品，具有耐用设计，保修期长达五年。

## CUTTING MACHINE DOWNTIME

Binsfeld Engineering is exhibiting the new Binsfeld RT406-1C, a single CANbus transmitter designed for the 6-zone S5 Neumag machines, at its stand, F12 in Hall W2. The RT406-1C complements the RT406-2C dual-CANbus transmitter introduced in 2010.

Binsfeld CEO, Stephen Tarsa, explained: "As with most of our products, the RT406-1C was a response to a specific customer request. The customer was looking for a more reliable alternative to the original transmitter that would not require any machine modifications. The RT406-1C is just what the customer was looking for: a drop-in replacement that offers Binsfeld's trademark features of reliability, intelligence and generous spacing between rotating and stationary components, all of which means less machine downtime."

The US-based manufacturer of rotary temperature transmitters for godets and heated rolls is also showcasing the RT362 two-channel transmitter specifically designed for Trützschler Switzerland AG (originally, SwissTex) filament spinning machines. The RT362 is also a drop-in replacement that allows fibre producers to add Binsfeld transmitter technology and reliability to existing machines, it said.

The company is also displaying its new line of calender (heated roll) transmitters, the RT310 Series, which were first introduced at ITMA Asia + CITME 2012.

Since then the company has developed smaller, more compact versions with the same feature set including error-detection and signalling to simplify troubleshooting the machine's temperature control system.

Binsfeld is demonstrating its flexible RT300 and RT350 series transmitters with multi-channel configurations to fit many machinery brands including Neumag, SwissTex, Rieter, Erdmann and Toray. Output signals are available for Dienes or Rieter frequencies or 4-20mA or voltage systems.

Last year Binsfeld launched an expanded website and mobile version that includes the full product offering including rotary temperature transmitters as well as

RT362 温度传感器

RT362 temperature transmitter



wireless telemetry systems for measuring torque and power on rotating shafts. It also received an Outstanding Business Award from the Northwest Michigan Workforce Development Board for its success over more than 30 years.

In January Binsfeld initiated efforts to achieve ISO 9001 registration and is on schedule to achieve certification later this year.

Binsfeld said it has a strong reputation for reliable, precision instrumentation designed to operate in the harsh environment of man-made fibre extrusion plants. Its systems incorporate sophisticated electronics in a durable design backed by up to a five-year warranty.